

 **BECKMAN  
COULTER**

**Biomek i3**



**Smart. Small. Powerful.**

Biomek i3 Benchtop Liquid Handler

**ACCELERATING**  
*answers*

 **BECKMAN  
COULTER**  
**Life Sciences**

# Small, But Mighty

Has this much automation power ever been packed into such a small, easy-to-use and budget-friendly package?

With its full-featured drag-and-drop software, the Biomek i3 Benchtop Liquid Handler performs like a full-sized automated workstation, without taking up full-sized bench space.

Equipped with a 1-1,000  $\mu\text{L}$ , 8-channel pipettor for precise reagent delivery, and camera-enabled error logging for quick troubleshooting, you can think of it as your new benchtop liquid handling companion.



## No automation expertise required

With easy-to-navigate interfaces, you can automate complex tasks efficiently, enabling you to focus on innovation and discovery rather than complicated programming.

From performing basic liquid transfers to reducing various burdensome manual processes in multi-step assays, this new workstation brings powerful efficiency to your bench.



## Seamless workflow enablement

Whether you're managing multiple protocols, running simple tests, or preparing for detailed analyses, this new workstation can enhance your workflow potential and help you accomplish more in less time.



## Comprehensive training and application support

You and your team will enjoy flexible learning options through virtual courses or in-person training at our facilities or your lab.

Regardless of their automation experience, your team can also easily access:

- Labware definitions
- Comprehensive learning modules
- Coaching Method tools to help you design multifaceted processes such as PCR setup\*
- Downloadable method repository for immediate use on MyBeckman Learning

## Accelerate a wide range of applications & workflows

Automation drives process acceleration for pharma, biotech, academia and government-sponsored research—virtually any lab focused on genomics, cell biology, proteomics, drug discovery, forensics and related research areas.

The Biomek i3 workstation can help you streamline essential processes/ applications such as:

- qPCR
- Cell transfection
- Plasmid prep
- Mass spec sample prep
- Antibody cocktailing
- Cell-based assays
- AMPure XP cleanup protocols

\*These can be run alone or used to enhance skills in looping, aspiration and dispensing, enabling you to develop more complex workflows based on your needs.



# Features That Make it Smart *and* Powerful

1. Bright, multicolor status light bar alerts you to the instrument's current mode, even from across the room.
2. A door interlock is a key safety mechanism that protects the user from moving parts. As soon as the door is opened, instrument operation is paused.
3. Internal LED light illuminates the deck for easy access and monitoring of your workspace status.
4. Fixed 8-channel pipette head with select tip functionality and 1-1,000  $\mu$ L pipetting range with disposable 96-format tips.
5. Open-platform design with grid-based deck includes 15 ANSI/SLAS-compatible reconfigurable labware positions + 5 optional flex positions for plates, tips and/or reservoirs if needed.
6. Integrated gripper to move labware (e.g., microplates, racks, tip boxes, reservoirs & lids).
7. HEPA filter (optional add-on) removes small particles in the air (e.g., dust, pollen, mold spores, bacteria and other hazardous materials) to maintain a clean working environment.
8. On-deck device integration to extend instrument capabilities (e.g., shaking, temperature control).
9. UV-C light-enabled for extra peace of mind.
10. Camera-enabled error log to expedite response time and system diagnosis.
11. Full-featured Biomek 5.5 Software (Windows 11 compatible) proven to enable even the most complex workflows thanks to 25+ years of refinement.
12. Touchscreen monitor for easy touch operation (wireless keyboard and mouse are also included).
13. Trash ALP/waste bin enhances efficiency in waste collection/disposal.



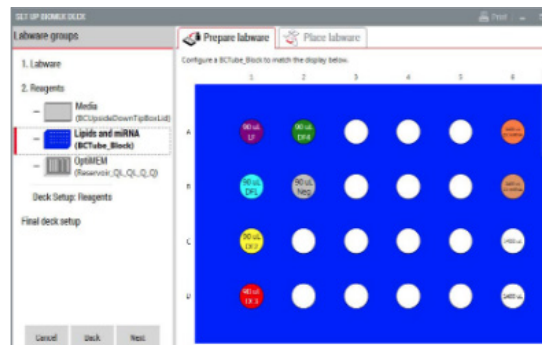
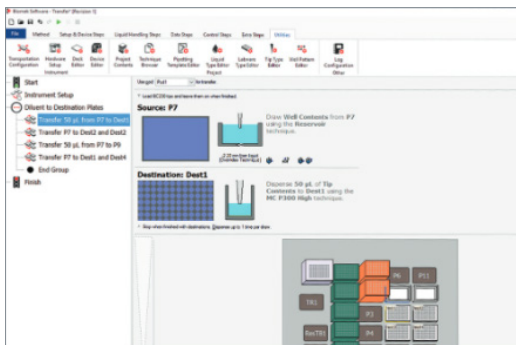
Learn more about the  
Biomek i3 workstation

# Industry-leading Biomek i-Series Software Delivers Powerful Workflow Intelligence

The latest version of customer-acclaimed Biomek i-Series software maximizes ROI by giving you unprecedented control over your liquid handler.

Biomek software provides:

- An intuitive, icon-based drag-and-drop interface
- Full control over complex tip movements that mimic manual pipetting
- Flexibility to integrate third-party devices with full software control
- Support for 21 CFR Part 11 compliance in regulated environments
- Confidence that your samples are being treated consistently, and built-in data reporting that enables use of method data to make decisions

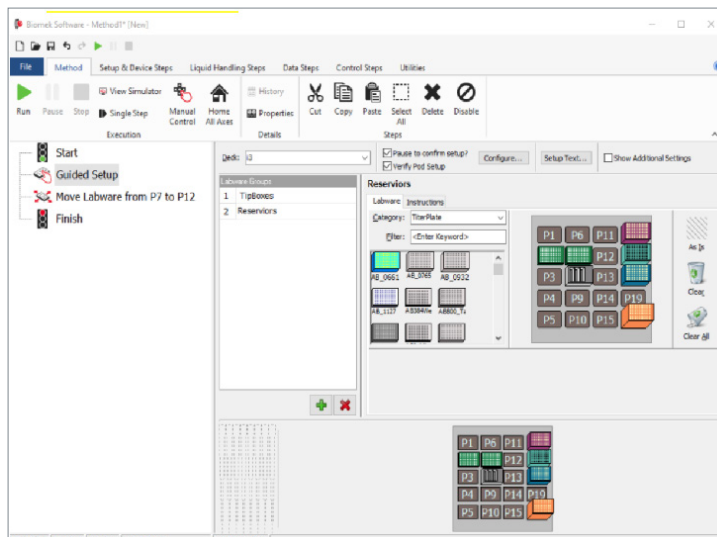


## New to automation? Your new lab companion will help you:

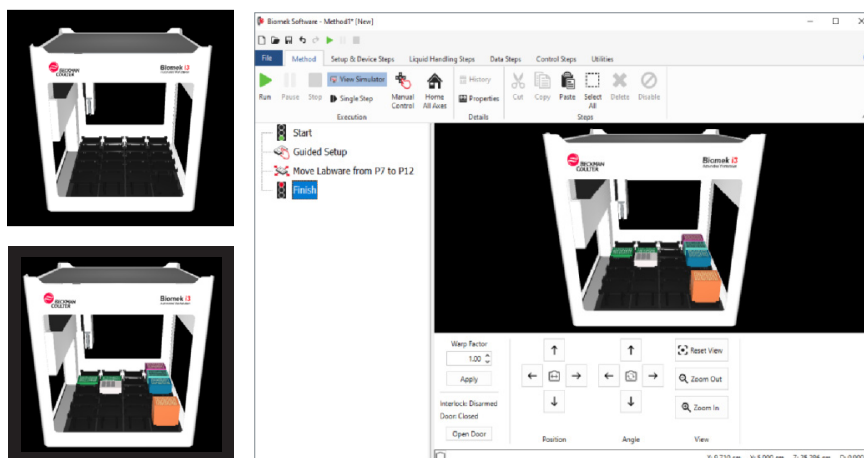
- Define new deck layouts and labware placement for fast, easy method creation.
- Point-and-click your way to selecting color-coded Biomek tip racks.
- Quickly select pipetting techniques and liquid types via dropdown menus.
- Program and run methods directly on the system.
- Import/export existing methods.
- Scan plates and import sample IDs based on barcodes (C59043 Hand Held 2D and Linear Barcode Scanner).
- ...And much more

Biomek software helps you save time and stay productive by enabling fast setup, execution, and real-time method adjustments—all directly on the instrument. With its intuitive interface, you can keep your workflows moving without leaving the lab or relying on external programming support.

**Guided Labware Setup Software** organizes details on labware and reagents, and leads you through setup, step-by-step.



The Biomek 3D simulator enables risk-free method evaluation, so you can visualize and refine workflows before running them—saving time, reducing errors, and protecting valuable samples.



Learn more about the Biomek i3 workstation

### Focus on analysis, not on being an IT expert

In a survey, 73% of Biomek workstation users reported they never had to consult their IT department to pull reports from their Biomek Workstation. A simple graphical user interface provides users with results without the need to learn automation language.

# Biomek i3 Liquid Handler Pipette Tips

Only Biomek pipette tips are validated and approved for use with the Biomek i3 workstation. Available with conductive or non-conductive properties, all our tips are certified to be:\*\*\*

- RNase-and DNase-free
- DNA-free (human & mouse)/PCR inhibition
- Pyrogen/endotoxin-free
- Trace metal-free

\*\*\*Based on sample results below detectable limits.



Learn more about the Biomek pipette tips

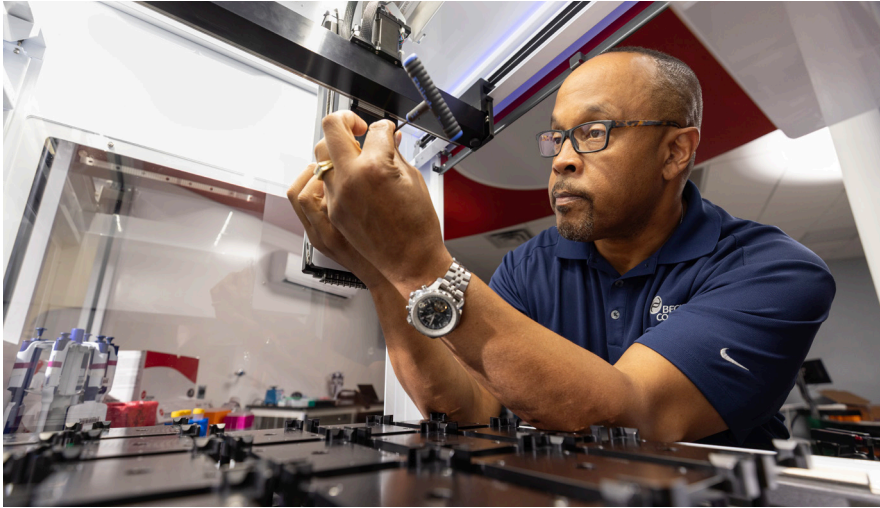
## System Specifications

Part number	Description	Power Requirements	Weight	Dimensions (W x D x H)
D22660	Biomek i3 Benchtop Liquid Handler	10 A, 100-240 V, 50/60 Hz	Base instrument: 49.89 kg (110 lbs)  Fully assembled instrument with full deck: 64.41 kg (142 lbs)	Width: 73.152 cm (28.8") Depth: 78.486 cm (30.9") Height: 82.55 cm (32.5"), door closed 128.524 cm (50.6"), door open

## Biomek Accessories

Part number	Description
D29753	Biomek i3 Tall ALP designed for standard labware or standard pipette tip boxes
D29752	Biomek i3 Short ALP designed for Large P1000 pipette tip box
D31321	Biomek i3 Trash ALP/Waste Bin
D31322	Biomek i3 Waste Bags/Package of 20 biohazard bags for waste bin/trash

# Service Offerings



Part number	Description	Details
D31565	Biomek i3 Welcome Package Service Contract	<p><b>Included in the Welcome Package</b></p> <ul style="list-style-type: none"> <li>• Installation</li> <li>• 3 Learner Licenses</li> <li>• Instrument relocation within the first year</li> <li>• Accidental Damage (user error) 1x occurrence ~50% coverage</li> <li>• Remote Service support</li> <li>• Basic onsite operator training by FSE</li> <li>• Priority response over warranty customers</li> </ul>
Part number	Description	
D31571	Biomek i3 Protective Service Contract	
D31572	Biomek i3 Protective OQ Service Contract	
D31573	Biomek i3 Comprehensive Service Contract	



Learn more about our Welcome Package



To order, scan the code, visit [beckman.com](https://beckman.com) or contact your local representative.



Biomek Automated Workstations are not intended or validated for use in the diagnosis of disease or other conditions.

© 2025 Beckman Coulter, Inc. All rights reserved. Beckman Coulter, the stylized logo and the Beckman Coulter product and service marks mentioned herein are trademarks or registered trademarks of Beckman Coulter, Inc. in the United States and other countries. All other trademarks are the property of their respective owners.

For Beckman Coulter's worldwide office locations and phone numbers, please visit Contact Us at [beckman.com](https://beckman.com)  
2025-GBL-EN-108619-v4

